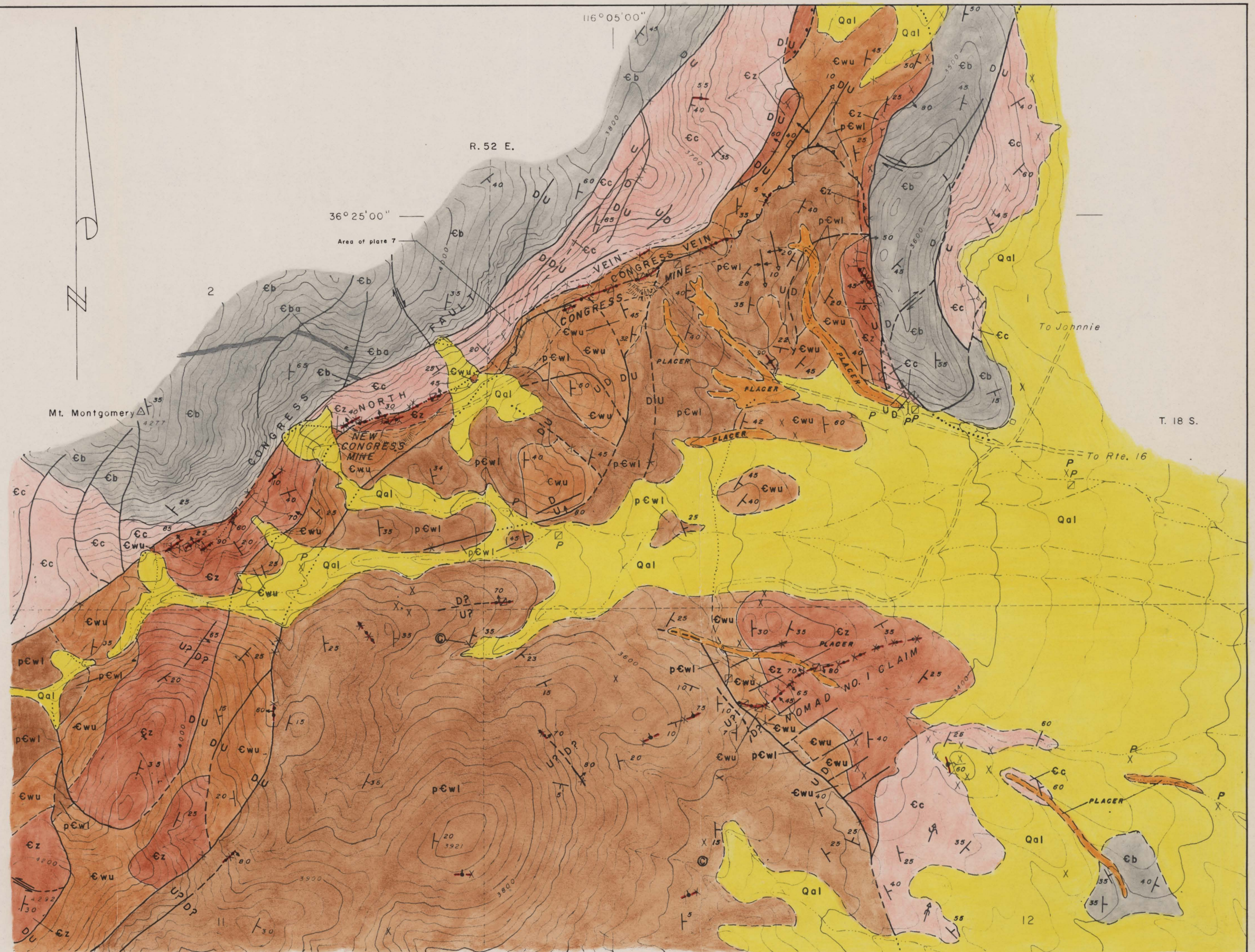


EXPLANATION

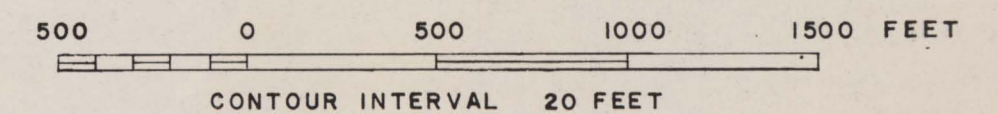
- LATE PLIOCENE (?) TO RECENT
- Qal
Surficial deposits
Not differentiated
- EARLY AND MIDDLE CAMBRIAN
- €b
€ba
Bonanza King Formation
€ba - Argillaceous limestone bed
- €c
Carrara Formation
- €z
Zabriskie Quartzite
- LATE PRECAMBRIAN AND EARLY CAMBRIAN
- €wu
p€wl
Wood Canyon Formation
€wu - Dolomite-bearing top half of upper member
p€wl - Units below €wu
- Contact
Dashed where approximately located, dotted where concealed
- 50° D? U? 100°
Fault,
showing dip and relative direction of movement
Dashed where approximately located or inferred,
dotted where concealed;
(DU) dip slip (D is downthrown side, queried where inferred),
(=) strike slip
- Low angle fault
Dashed where approximately located
- Zone of tectonic readjustment
Dashed where approximately located
- 40° 10° 10°
Anticline and syncline,
showing trace and dip of axial plane and plunge of axis
- ⇒ ⇒
Plunge of small anticline and paired anticline and syncline
- 25°
Strike and dip of beds
- 60° 90°
Quartz vein, showing dip
Dashed where approximately located,
dotted to show continuity of host structure
- 60° 90°
Small quartz vein,
showing dip or where orientation is uncertain (right)
- ©
Secondary copper occurrence
- PLACER
Placer digging
(P) in conjunction with a mine symbol denotes a placer working or prospect
- ☒ - - - X
Shaft, adit, trench, pit, dump
Shafts usually inclined
- ☐
Shed



Base enlarged and modified from U.S. Geological Survey
Mt. Schader, Nevada (7.5') topographic quadrangle map,
1968.

Geology by S. W. Ivošević 1970-72.

SCALE 1"=6000



JOHNNIE DISTRICT, NYE COUNTY, NEVADA CONGRESS MINING AREA SURFACE GEOLOGIC MAP

Scale 1"=500'
By S. W. Ivošević 1972

PLATE 3

NOTE:
Point of observation of small feature is at end
of symbol where used in conjunction with another
geologic symbol or symbol for mine working.

2580 0032

032-023-0336

235 item 2